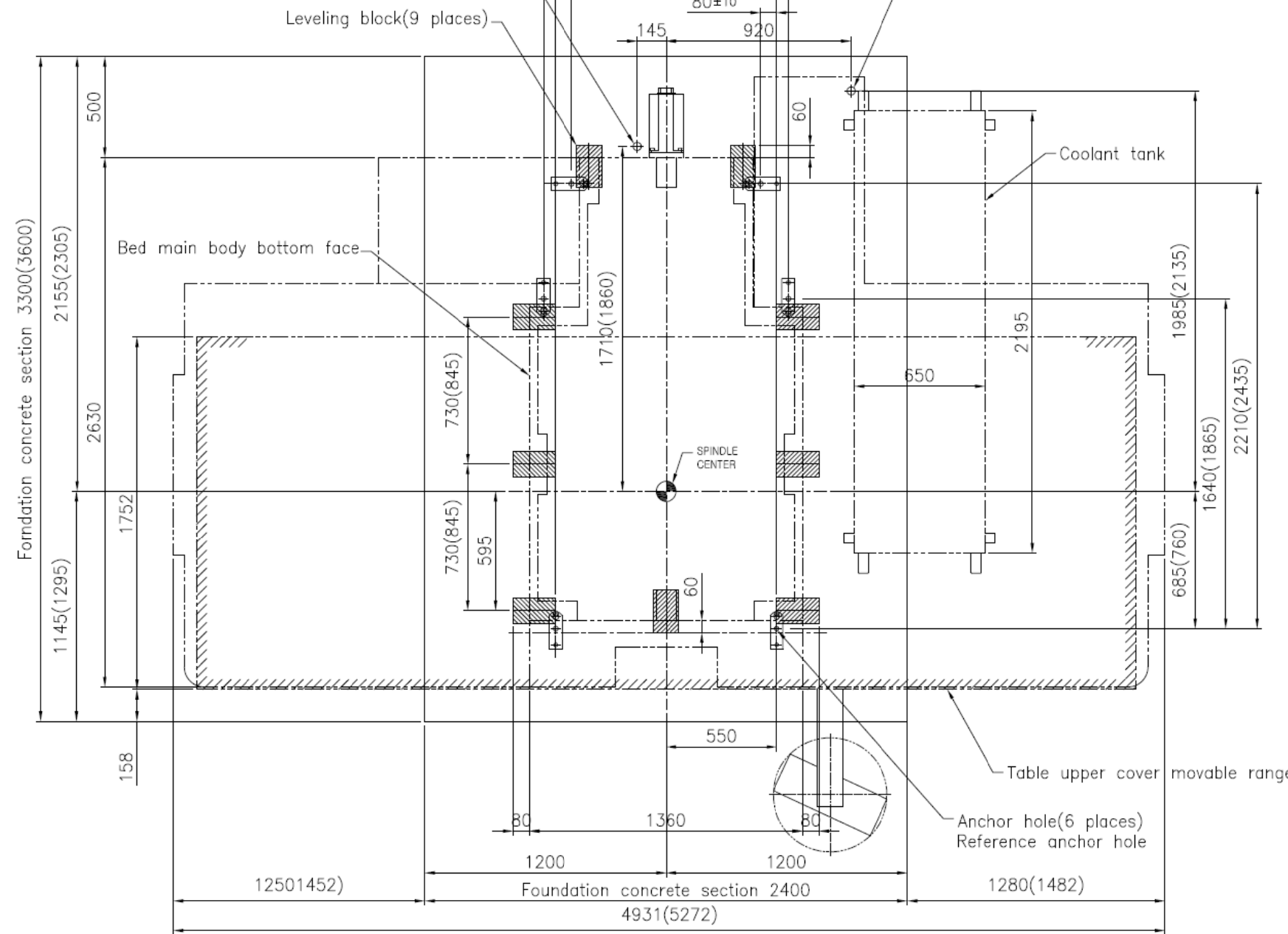


2.5 Foundation and Installation Drawing

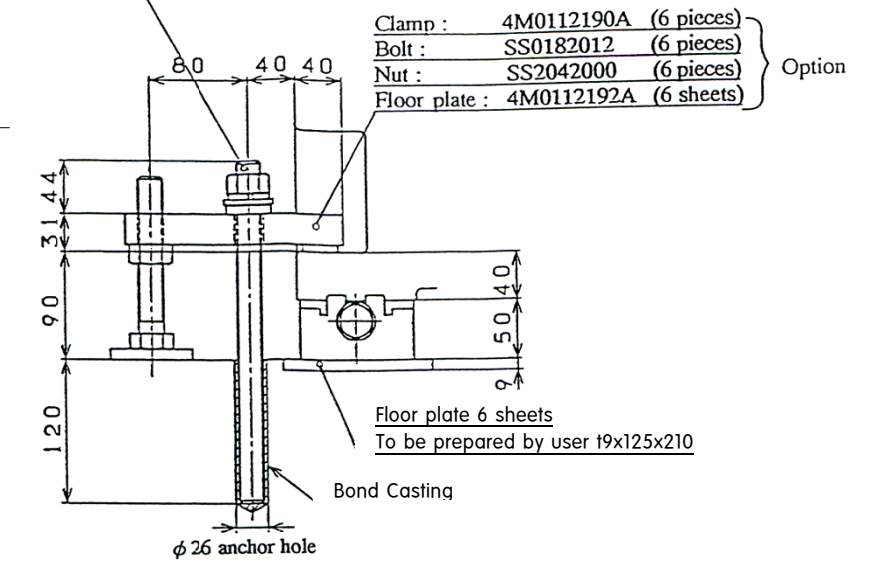
**LCV 66/(80) STANDARD**

Air source connection (Height of hose nipple: Approx.320mm)  
 0.4~0.6MPa (4~6kgf/cm<sup>2</sup>) Capacity : 160NL/min or larger  
 Hose Nipple Ø12 Rc 1/4 (Hose inside dia Ø12)

Power cable incoming port (height to Control Box base :870)  
 Power capacity : spindle motor 18.5/15kw : 43KVA  
 cable Size : spindle motor 18.5/15kw : min. 50mm<sup>2</sup>  
 Grounding : Class 3 (100Ω max.)  
 : Cable size equal to the power cable



- Anchor bolt : 4M0115254A (6 pieces)
  - Spring washer : SS2552000 (6 pieces)
  - Spherical washer : YS9195020 (6 pieces)
  - Nut : SS2042000 (6 pieces)
- } Option



CAUTION : the foundation anchoring parts are option

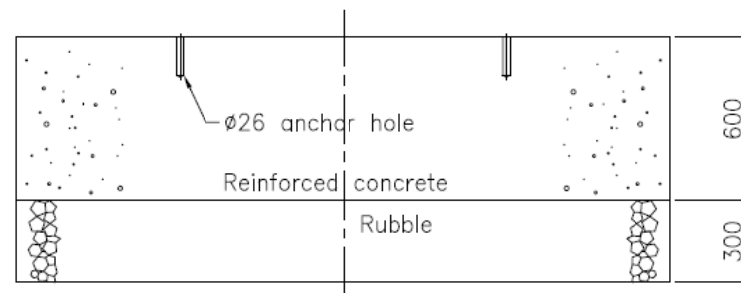
Foundation and Installation:

To maintain machine precision and prevent vibration, pay special attention to the following..

1. the foundation should be rugged enough to maintain safety and horizontality for the machine weight according to the ground for installation place  
 [Nominal strength : 23MPa (230kgf/cm<sup>2</sup>)min]
2. the foundation concrete should be reinforced with the reinforcing bar Arranged as appropriate so that it may sufficiently withstand the machine weight
3. The foundation concrete should be cured for 4 weeks.
4. When installing the machine, set leveling blocks for leveling, centering and Prevent oscillation, and adjust and secure with foundation bolts(option).
5. The ground soil nearing power required should be 0.06MPa {6t/ m<sup>2</sup>}Min
6. When the mature of the soil and soil nearing capacity are unfavorable, Determine the pile size and number of piles accordingly for installation.
7. Drill each anchor hole in position within ±10mm from the reference anchor hole
8. Avoid the anchor hole position to embed the reinforcement.
9. For the bond anchor procedure, refer to "2.4. Anchor Bolt Embedding Work Procedure" in Foundation & Installation Instruction Manual.

NOTE : Customer should prepare the following adhesive (bond) at the same

time of drilling the anchor holes.  
 Bond E200(Konishi Co, Ltd.)  
 Amount required : 1.0kg (standard spec.)



LCV 66(80)  
 Total machine weight : 12000kg (LCV66)/17000kg(LCV80)  
 Max. workpiece weight loadable on table : 2000kg,  
 LCV80 : 2500kg